

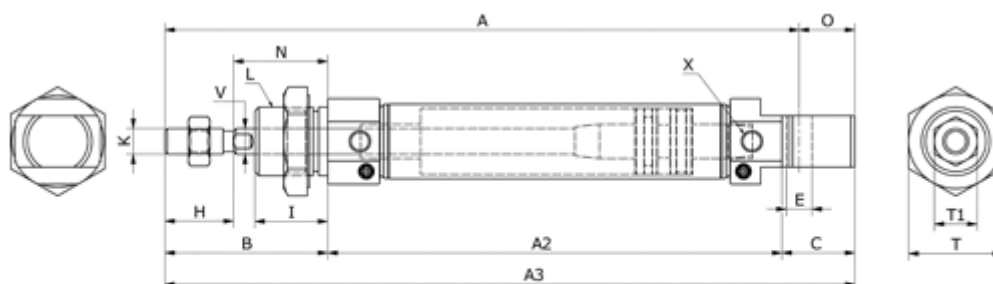
# Data Sheet



Article number: 58MIC16S0175CAP

Description: Cylinder MIC-16x175-S-CA, Ø16x175  
Double acting with cushin type - port M5

## Measures



A	= 98	I	= 17	V = 6
A2	= 56	K	= M6x1,0	X = M5x0,8
A3	= 111	L	= M16x1,5	
B	= 38	N	= 22	
Bore diameter	= 16	O	= 13	
C	= 17	Stroke	= 175	
E	= 6	T	= 10	
HS	= 16	T1	= 22	